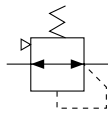


Vacuum Regulator

Series IRV1000/2000/3000

JIS Symbol



Standard Specifications

Model	IRV1000	IRV2000	IRV3000
Fluid	Air		
Regulating pressure range ⁽¹⁾	-100 to -1.3 kPa		
Atmospheric intake consumption ⁽²⁾	0.6 ℓ/min (ANR) or less		1.1 ℓ/min (ANR) or less
Knob resolution	Within 0.13 kPa		
Ambient and fluid temperature	5 to 60°C		
Port size	Rc 1/8	Rc 1/4	Rc 1/4, 3/8, 1/2
Pressure gauge port size	Rc 1/8 (2 locations)		
Weight (kg) [Without accessory]	0.12	0.27	0.7

Note 1) Use caution it varies depending on the pressure in vacuum pump side.
 Note 2) Taking air from atmosphere all the time.

How to Order

IRV 1 000 - 01

Vacuum regulator

Body size

1	IRV1000
2	IRV2000
3	IRV3000

Thread type

Nil	Rc
N*	NPT
F*	G

* Option

Suffix (Pressure gauge mounting)

Nil Standard

R Rear pressure gauge mounting

Accessory

Nil	None
B	With bracket (Note)
G	With pressure gauge

Note) Brackets are shipped together, (but not assembled).

Port size

Symbol	Size	Application		
		IRV1000	IRV2000	IRV3000
01	1/8	●	—	—
02	1/4	—	●	●
03	3/8	—	—	●
04	1/2	—	—	●

Specification Combinations

◎ Standard specification ○ Valid combination □ Invalid combination

Specifications	Symbol	Applicable model		
		IRV1000	IRV2000	IRV3000
Standard specifications	Connection Rc 1/8	◎		
	Connection Rc 1/4		◎	◎
	Connection Rc 3/8			◎
	Connection Rc 1/2			◎
Accessory	Bracket	○	○	○
	Pressure gauge	○	○	○
Option specifications	Pressure gauge reverse mounted	R	○	○
	Connection NPT 1/8	N01	○	
	Connection NPT 1/4	N02		○
	Connection NPT 3/8	N03		○
	Connection NPT 1/2	N04		○
	Connection G 1/8	F01	○	
	Connection G 1/4	F02		○
	Connection G 3/8	F03		○
	Connection G 1/2	F04		○

Accessory (Option) Part No.

Description	Part no.		
	IRV1000	IRV2000	IRV3000
Bracket	P53801018	P53802016	P53803013
Pressure gauge *	GZ33-K-01	GZ43-K-01	GZ43-K-01

* Precision of pressure gauge within ±3% (Full span)

F.R.L.

AV

AU

AF

AR

IR

VEX

AMR

ITV

IC

VBA

VE□

VY1

G

PPA

AL